



PRODUCT CATALOG

articulators • measures condyle displacement • anatomic facebow • hinge
axis recorder • mounting plates • equipment systems • accessories

Inside Front
Cover
blank

Welcome to AD2

When Dr. Bob Williams first envisioned AD2 years ago, he knew there were doctors globally that needed access to high quality articulators, facebows and other precision instruments. At the time, he didn't fully realize just how many people he was about to help by creating this company.

What started as a mere concept has now turned into a growing line of products being sold all over the world. Our catalog is a reflection of this growth and our products . . . evolving, expanding and raising the bar on quality.

Whether you're an existing customer or someone still contemplating purchasing AD2, we invite you to take a look at our catalog. But we're not done quite yet . . . keep your eyes on our website at www.ad2usa.com for more new product releases still to come.

Enjoy,

The AD2 Team



**All AD2 products are proudly
made in the U.S.A.**

Table of Contents

Articulators and Accessories.....	1
AR100011 Articulator with Straight Incisal Pin Module, Mounting Stand and Test Column	
AR100012 Articulator with Curved Incisal Pin Module, Mounting Stand and Test Column	
AR100021 Articulator with Straight Incisal Pin Module	
AR100022 Articulator with Curved Incisal Pin Module	
AR140000 Straight Incisal Pin Module	
AR140050 Curved Incisal Pin Module	
AR100080 Mounting Stand	
AR100090 Test Column	
AR300000 Support Leg	
AR240079 Mandibular Mounting Plate Spacer	
AR330000 Analog Kit	
AR330005 0.5mm Analogs	
AR330010 1.0mm Analogs	
AR330015 1.5mm Analogs	
AR330020 2.0mm Analogs	
AR330025 2.5mm Analogs	
AR330008 0.5mm Clear Analog	
AR340000 0 B.M. (Bennett Movement) Analog Kit	
MCD & Accessories	5
MC100010 MCD (Measures Condyle Displacement)	
MC700000 Patient Graph Pad	
MC170070 Magnetic Support Column	
MC700010 Data Record Sheets	
AD2 Anatomic Facebow & Accessories	7
FB400000 Anatomic Facebow	
FB400015 Nasion Relator Assembly	
FB400023 Mounting Table Assembly	
AB310020 Accu-Bite	
FB400027 Flat Bite Fork Assembly	
FB400028 Flat Bite Fork	
FB400030 Bite Fork Stem Assembly	
FB400029 Curved Bite Fork	
FB400129 Curved Bite Fork Assembly	
FB400038 Pedo Bite Fork	
TP400027 Bite Fork Stabilizers	
FB400030 Bite Fork Stem Assembly	
AD2 Hinge Axis Recorder.....	11
HA760000 Hinge Axis Recorder Deluxe	
HA750000 Hinge Axis Recorder	
HA750090 Hinge Axis Graph Pad	
HA770005 Discluder 5 Pack	
HA770010 Discluder 10 pack	
HA750010 Clutch Bracket Assembly	
AD2 Equipment Systems.....	13
AR100005 AD2 Professional System (Straight Incisal Pin)	
AR100006 AD2 Professional System (Curved Incisal Pin)	
AR100007 AD2 Magnetic Professional System (Straight Incisal Pin)	
AR100008 AD2 Magnetic Professional System (Curved Incisal Pin)	
AR110050 Bioesthetic Basic System	
AR110051 Bioesthetic Basic Magnetic System	
AR110060 Bioesthetic Professional System	
AR110061 Bioesthetic Magnetic Professional System	
Mounting Systems and Accessories.....	16
MP280000 Magnetic Mounting System	
MP280065 AD2/Panadent Compatible Magnetic Mounting Plates	
MP290065 Whip Mix/Hanau/Denar Compatible Magnetic Mounting Plates	
MP291065 Stratos Compatible Magnetic Mounting Plates	
MP292065 Artex Compatible Magnetic Mounting Plates	
MP293065 SAM Compatible Magnetic Mounting Plates	
MP294065 KaVo Compatible Magnetic Mounting Plates	
MP280010 Magnetic Mounting Base Assembly	
MP270065 AD2/Panadent/Whip Mix/SAM Screw Mounting Plates	
MP270165 Denar/Hanau (twin pin) Compatible Screw Mounting Plates	

Articulators & Accessories



AR100022 (shown with optional MP280000 magnetic mounting system)

The AD2 articulator is crafted from machined aluminum, using a polished finish and anodized frames for long-lasting beauty and easy clean up. Our semi-adjustable, Arcon style articulator accommodates Bennett movements up to 2.5mm, and the angle of eminence can be set from 25° – 72°. The new modular incisal pin design now allows you to quickly change your articulator from a straight pin to a curved pin configuration (or vice versa). Your articulator arrives calibrated, ready to use and is interchangeable with other calibrated AD2 articulators as well as all calibrated Panadent® articulators for easy transferral of mounted cases.



AR100022 Articulator with Curved Incisal Pin Module

AR100021 Articulator with Straight Incisal Pin Module (not shown)

Our articulator includes many new features designed to make it easy and intuitive to use, including a polished, anodized finish for improved aesthetics and maintenance, modular incisal pins (which allow a single articulator to function as both a straight and curved pin instrument), horizontal and vertical reference lines on the lower frame, and magnetic centric latch retention.



AR100011 Articulator with Straight Incisal Pin Module, Mounting Stand and Test Column

AR100012 Articulator with Curved Incisal Pin module, Mounting Stand and Test Column (not shown)

First time buyers of AD2 articulators should consider our AR100011 or AR100012 models, which includes an aluminum mounting stand and test column for calibration testing. If you already have an AD2, no need to buy unnecessary extras . . . just pick up the AR100021 or AR100022, which is the articulator only (no stand or test column).

Articulators & Accessories



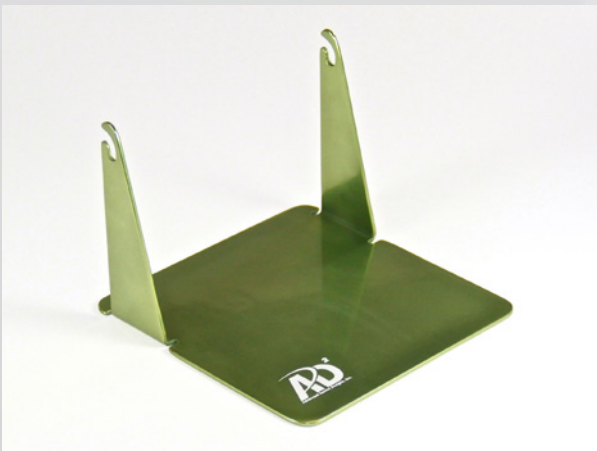
AR140000 Straight Incisal Pin Module

When you need measurements in millimeters, try the AD2 Straight Incisal Pin Module for your new articulator. The module slides easily into the upper frame and tightens down with a simple twist of your hand.



AR140050 Curved Incisal Pin Module

The AD2 Curved Incisal Pin Module is calibrated using a relational measurement starting from the incisal edge. The tip of the pin remaining in the same vertical dimension on the incisal table when the articulator is opened and closed.



AR100080 Mounting Stand

If you need an extra mounting stand for your practice or lab, look no further. The AD2 mandibular mounting stand is constructed of machined aluminum and green anodized to keep your work area looking good.

Articulators & Accessories



AR100090 Test Column

Want to be sure your work is 100% accurate? With our Test Column, you can create a calibration split cast for your articulator and MCD. With just some dental stone and separating medium, you'll be ready quickly to have a permanent calibration testing cast for use at any time in the future.



AR300000 Support Leg

Ready to get a new perspective on your work? With the AD2 Support Leg, you can safely lean your articulator and MCD back at a 45° angle. The leg snaps on easily, looks stylish and still leaves the side frame of the articulator or MCD open for your hand to grab and lift with.



AR240079 Mandibular Mounting Plate Spacer

We've mentioned that AD2 articulators interchange seamlessly with some competitors' models, but what do you do when you've been working with "short", or "low" articulators? As always, we've provided an easy solution with our Mandibular Mounting Plate Spacer. Simply remove the lower mounting knob from your articulator and attach (with two provided allen head screws) our plate spacer. All critical vertical dimensions are maintained and you're back to work in just a few short minutes.

Articulators & Accessories

Different patients mean different side shift patterns. We've got you covered though with our family of precision molded analogs ranging from 0.5 mm all the way to 2.5 mm (sold in pairs). If you're looking to save some money, purchase the AR330000, which includes all 5 pairs of analog sizes for one low price (up to 20% less expensive than buying individually).



AR330000 Analog Kit



AR330005 0.5mm Analogs



AR330010 1.0mm Analogs



AR330015 1.5mm Analogs



AR330020 2.0mm Analogs



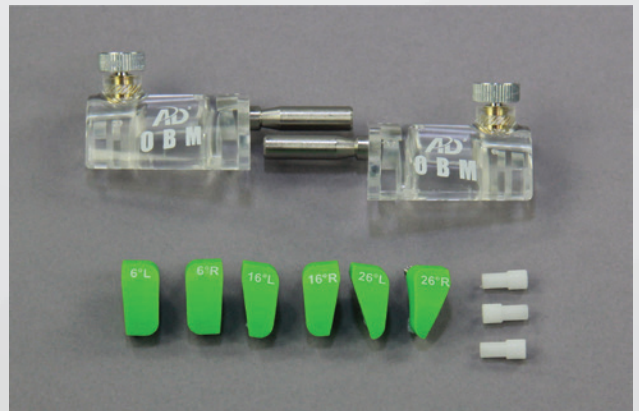
AR330025 2.5mm Analogs

If you're in a teaching environment, check out our 0.5mm Clear Analog. What better illustrates your points than having students observe the condyle move through the fossa box? Let your students experience their "Aha" moment with this great instructional analog.



AR330008 0.5mm Clear Analog

You asked, we listened....AD2 has the complete solution when immediate side shift and different condylar curvatures are needed. With clear 0 Bennett movement analogs and 3 different sets of condyle curvature inserts (6°, 16° and 26°), we supply you with everything needed for your office or learning environment.



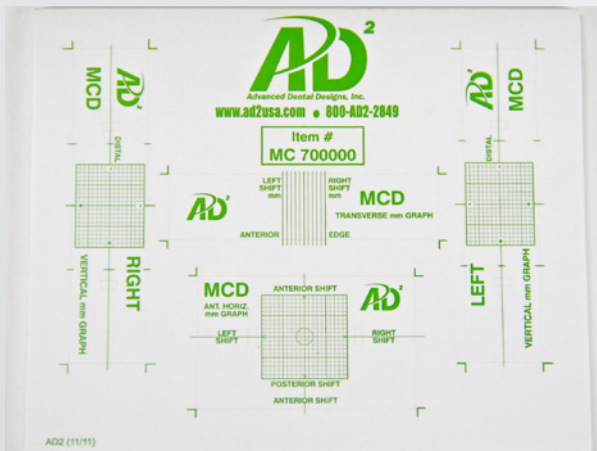
AR340000, 0 B.M. (Bennett Movement) Analog Kit

MCD & Accessories



MC100010 MCD

The AD2 MCD (Measures Condyle Displacement) lines up on the same axis as the AD2 articulator and gives you critical diagnostic information when one of your basic treatment goals is seated condylar position – centric relation. Like our articulator, the MC100010 is crafted from machined aluminum, polished and green anodized for quick clean up and good looks.



MC700000 Patient Graph Pad

When working with the MCD, you'll need these Patient Graph pads, which contain 25 sheets of adhesive, ready-to-use graphs. Each page includes a left and right vertical grid and a lateral horizontal grid.

MCD & Accessories



MC170070 Magnetic Support Column

If you've made the move to magnetic mounting, go all the way with our magnetic support column for the MCD. Precision molded in green plastic, this column will firmly hold your upper and lower MCD frames together when not in use.

Patient Name _____ Case Number _____ Date _____

AVG. A/P AXIS CHANGE: _____ mm
 AVG. VERT. AXIS CHANGE: _____ mm

Interfacial Width: _____ mm
 Right Emergence: _____ mm
 Left Emergence: _____ mm
 Right S.S.: _____ mm
 Left S.S.: _____ mm

CR - CC Difference (RIGHT/LEFT) _____ mm
 Transverse Condylar Position (RIGHT/LEFT) _____ mm

AD² MCD DATA SHEET
 www.ad2usa.com • 800-882-2849

MC700010 Data Record Sheets

To keep your information organized, these sheets are a great place to store used adhesive patient graphs. They come 50 to a pad and are 3 hole punched for your convenience.

AD2 Anatomic Facebow & Accessories



FB400000 Anatomic Facebow

The AD2 Anatomic Facebow is a complete system including the facebow, mounting table, nasion relator, two bite fork assemblies with toggle screws and an allen head screwdriver. With integrated bubble levels and polished aluminum construction, our facebow was designed for both doctor and patient comfort.



FB400015 Nasion Relator Assembly

We all know with work and travel, things sometimes get lost or misplaced. If you find yourself missing your nasion relator, it's not a problem with AD2. We can ship a replacement nasion relator assembly to you overnight if needed.



FB400023 Mounting Table Assembly

The AD2 mounting table gets the job done quickly and accurately for you. With both high and low insertion locations for the bite fork stem assembly, this mounting table is all you need.

AD2 Anatomic Facebow & Accessories



AB310020 Accu-Bite (box of 180)

AD2 Accu-Bites utilize the same wax compound you're accustomed to for capturing bite registration on a bite fork. The individual, self-adhesive Accu-Bites can be easily applied and removed for use in the busiest office environment.



FB400027 Flat Bite Fork Assembly

If you work on more than one patient at a time with your facebow, you'll want to purchase a few extra bite fork assemblies. This assembly includes a flat bite fork (FB400028) and a stem assembly (FB400030).



FB400028 Flat Bite Fork

Our AD2 Flat Bite Fork is constructed of stainless steel and ready for repeated sterilizations and cleanings.

AD2 Anatomic Facebow & Accessories



FB400029 Curved Bite Fork

If you have patients where the lower 2 molars are extruded or where the upper 2 molars are not present, try out our Curved Bite Fork. In these instances, the curved bite fork better captures posterior registration marks and is more comfortable for the patient. Like all of our bite forks, it's constructed of steel and ready for plenty of use.



FB400129 Curved Bite Fork Assembly

If you need a bite fork assembly on standby for patients with extruded lower 2 molars or missing upper 2 molars, you'll want to pick up a Curved Bite Fork Assembly. This assembly includes a curved bite fork (FB400029) and a stem assembly (FB400030).



FB400038 Pedo Bite Fork

When treating children, you'll want to use the AD2 Pedo Bite Fork. It has all the same traits of our adult bite fork with a shortened posterior length to accommodate a younger mouth.

AD2 Anatomic Facebow & Accessories



TP400027 Bite Fork Stabilizers (pack of 60)

Our Bite Fork Stabilizers are composed of a white foam material with self-adhesive on one side for affixing to a bite fork. These stabilizers are an easy alternative to bite registration material or cotton rolls and allow the lower teeth to support the bite fork against the upper teeth.



FB400030 Bite Fork Stem Assembly

Our stem assembly is simple to use and allows the bite fork to be mounted to the facebow.

AD2 Hinge Axis Recorder



HA760000 Hinge Axis Recorder Deluxe

The AD2 Hinge Axis Recorder Deluxe System is exactly what you'd expect from us - a comprehensive system with everything you need for professional results. The system includes our HA750000 Hinge Axis Recorder as well as the AR330000 Complete Analog System. When your system arrives, you'll enjoy the best of AD2 quality including adjustable side arms, spring loaded lead holders, discluders, mounting stand, analogs with side shifts ranging from 0.5mm - 2.5mm and even multiple plaster retention rings for mounting models.



Adjustable Side Arms and Recording Frame

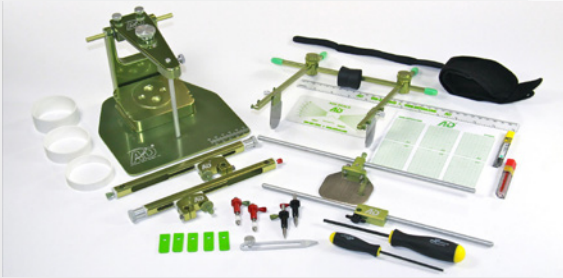
The adjustable side arms and recording frame are designed to be lightweight for maximum patient comfort and use single screw adjustments for all anterior-posterior and side-to-side positioning. These components use hand polished aluminum with high gloss anodized finishes. And just to be sure we give you the ultimate in smooth, we Teflon impregnate all parts.



Hinge Axis Recorder with Travel Case

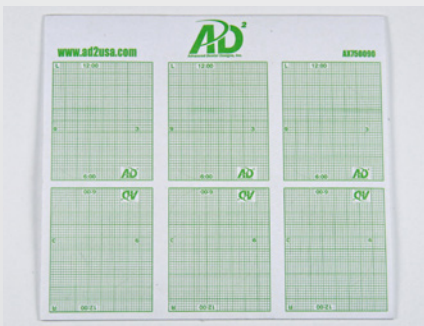
At AD2, we know all about the demands placed on top dental professionals. One day you're in the office treating patients, and the next day you're on a plane getting ready to present cases to a room full of eager minds. Don't get slowed down in the process.....the Hinge Axis Recorder arrives packed in a durable plastic case measuring just 19" x 13" x 8" (48cm x 33cm x 20cm) and weighing 9 pounds (4 Kg).

AD2 Hinge Axis Recorder



HA750000 Hinge Axis Recorder

Our entry level Hinge Axis Recorder gives you everything you need to record the mandibular pathway quickly and economically. Start with this system to experience the simplicity of the AD2 system and add in the AR330000 analog system when you're ready.



HA750090 Hinge Axis Graph Pad

When you need more adhesive graphs for your Hinge Axis Recorder, you'll be back to work quickly with our graph pad. One pad provides 30 crack-and-peel graphs, enough for 15 patients (left and right sides).



HA770010 Discluser 10 pack

HA770005 Discluser 5 Pack (not pictured)

Save sterilization time and protect your patients using our disposable bite discluders. Packaged 5 (HA770005) or 10 (HA770010) discluders per pack, the discluser kit also includes a long allen head screw for use with the AD2 clutch plate bracket. You'll be able to stack multiple discluders (2mm thick) to handle any patient bite.



HA750010 Clutch Bracket Assembly

When you have multiple patients in process, save yourself headaches by having extra clutch bracket assemblies for use with your Hinge Axis Recorder. No more need to pour messy plaster.....with your Biocryl "suck down" bonded to the clutch bracket, your patient will be comfortable while you save time.

AD2 Equipment Systems

While buying equipment individually allows you to custom tailor your needs, AD2 also offers preconfigured systems using our most popular products. Not only does this simplify the ordering process for you, but it also saves you 10-15% in cost versus buying individually.



AR100008 AD2 Magnetic Professional System with AR100012 Articulator

AR100005 AD2 Professional System with AR100011 Articulator, uses non-magnetic mounting (not shown)

AR100006 AD2 Professional System with AR100012 Articulator, uses non-magnetic mounting (not shown)

AR100007 AD2 Magnetic Professional System with AR100011 Articulator (not shown)

AD2 Professional System

The AD2 Magnetic Professional System (item #AR100007) gives you a complete system of dedicated instruments offering exceptional precision. Your system arrives packed in the travel case, pre-installed with all accessories, ready to use and includes all of the items below:

- ▶ AR10011 Articulator with a straight incisal pin module, mounting stand and test column
- ▶ MC100010 MCD
- ▶ FB400000 Anatomic Facebow
- ▶ AR300000 Support Leg
- ▶ MP280000 Magnetic Mounting System
- ▶ MP280010 Magnetic Mounting Bases (2)
- ▶ MP170070 MCD Magnetic Support Column
- ▶ MC700000 MCD Patient Graphs (pad of 25 sheets)
- ▶ MC700010 Data Record Sheets (pad of 50 sheets)
- ▶ PK900010 Plastic Travel Case



PK900010 Travel Case for Professional System

AD2 Equipment Systems



AR110061 Bioesthetic Magnetic Professional System

AR110060 Bioesthetic Professional System, uses non-magnetic mounting (not shown)

Bioesthetic Magnetic Professional System

The Bioesthetic Magnetic Professional System has everything you'll need for Biologic Treatment (Level III) courses to mount cases magnetically including the Bioesthetic Basic Magnetic System (AR110051) and our Hinge Axis Recorder Deluxe System (HA760000). Your Magnetic Professional System will include:

- ▶ AR10012 Articulator with a Curved Incisal Pin module, mounting stand and test column
- ▶ MC100010 MCD
- ▶ FB400000 Anatomic Facebow
- ▶ HA760000 Hinge Axis Recorder Deluxe
- ▶ MP280000 Magnetic Mounting System
- ▶ MP280010 Magnetic Mounting Bases (3)
- ▶ AB310020 Accu-Bites (box of 180)
- ▶ TP400027 Bite Fork Stabilizers (pack of 60)
- ▶ TP600007 Bite-Tray™ Registration Plates (pack of 20)
- ▶ MP170070 MCD Magnetic Support Column
- ▶ MC700000 MCD Patient Graphs (pad of 25 sheets)
- ▶ MC700010 Data Record Sheets (pad of 50 sheets)
- ▶ PK900010 Plastic Travel Case
- ▶ AR300000 Support Leg (2)

AD2 Equipment Systems



AR110051 Bioesthetic Basic Magnetic System

AR110050 Bioesthetic Basic System, uses non-magnetic mounting (not shown)

Bioesthetic Basic Magnetic System

The Bioesthetic Basic Magnetic System has everything you'll need for Bioesthetic Diagnosis (Level II) courses to mount cases magnetically including:

- ▶ AR10012 Articulator with a Curved Incisal Pin module, mounting stand and test column
- ▶ MC100010 MCD
- ▶ FB400000 Anatomic Facebow
- ▶ AR300000 Support Leg (2)
- ▶ MP280000 Magnetic Mounting System
- ▶ MP280010 Magnetic Mounting Bases (2)
- ▶ AB310020 Accu-Bites (box of 180)
- ▶ TP400027 Bite Fork Stabilizers (pack of 60)
- ▶ TP600007 Bite-Tray™ Registration Plates (pack of 20)
- ▶ MP170070 MCD Magnetic Support Column
- ▶ MC700000 MCD Patient Graphs (pad of 25 sheets)
- ▶ MC700010 Data Record Sheets (pad of 50 sheets)
- ▶ PK900010 Plastic Travel Case

Mounting Systems and Accessories

At AD2, we're all about precision and affordability, which is why we've spent plenty of engineering time developing mounting systems and plates for most major articulator brands. Even if you haven't purchased one of our articulators yet, you can still enjoy savings up to 70% off of most mounting plates with our AD2 plates.



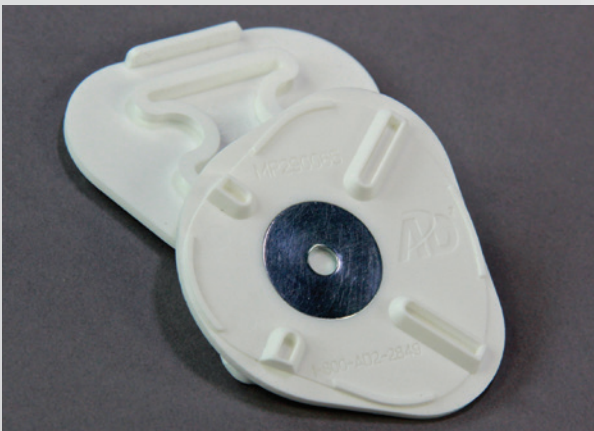
MP280000 Magnetic Mounting System

With our magnetic mounting system, AD2 provides dental professionals everything they need to work efficiently and accurately. Just attach our green anodized magnetic bases once, and you're ready to mount cases in seconds. The system includes two aluminum magnetic bases, 30 mounting plates, allen screws, wrench and Teflon AD2 EZ cushions (fully compatible with Panadent).



MP280065 AD2/Panadent Compatible Magnetic Mounting Plates (sold in bags of 50)

Already using our magnetic mounting system and need some extra mounting plates? These plastic mounting plates are ready to go in bags of 50 plates for your convenience and are fully compatible with Panadent's Magna-Split™ magnetic bases (not for use with PAL™ Plastic Articulator Lite).



MP290065 Whip Mix/Hanau/Denar Compatible Magnetic Mounting Plates (sold in bags of 50)

With the popularity of magnetic bases on Whip Mix® products (Whip Mix magnetic base #2003145, Denar® and Hanau™ magnetic base #2002367), AD2 now provides precision and compatibility with a magnetic plate for Whip Mix magnetic bases. Please note that these mounting plates cannot be used in place of Whip Mix Quick Mount/Accu Mount plates (Whip Mix #28700-08).

Mounting Systems and Accessories



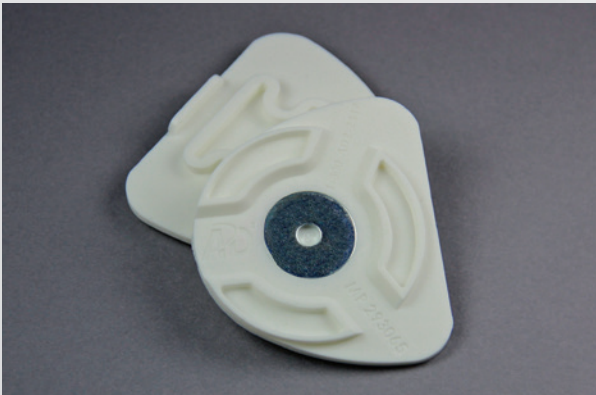
MP291065 Stratos Compatible Magnetic Mounting Plates
(sold in bags of 50)

The AD2 Stratos-compatible, magnetic plate fits perfectly on the Adesso base using the same arch shaped plate you've come to expect from us. No longer are you stuck with a strange circular magnetic plate trying to figure out which side faces forward. Save money, time and confusion with these plates.



MP292065 Artex Compatible Magnetic Mounting Plates
(sold in bags of 50)

Our Artex® compatible magnetic mounting plates are simple to use and hold your models tightly on the Splitex magnetic base. Don't fumble anymore with separate plates and metal inserts.....our AD2 plate is a simple, all-in-one solution.



MP293065 SAM Compatible Magnetic Mounting Plates
(sold in bags of 50)

Who says German engineering means paying higher prices? With AD2's new SAM® compatible magnetic mounting plates, you can enjoy your SAM Axiosplit magnetic bases and the convenience of AD2 plates at the same time.



MP294065 KaVo Compatible Magnetic Mounting Plates
(sold in bags of 50)

For far too long, we've seen dental professionals paying too much money for very expensive KaVo mounting plates or worse yet, fumbling with interchangeable plastic clips. We've taken all the guesswork and expense out of using KaVo now with our plastic mounting plate. It has our AD2 serpentine plaster bridge you've come to expect and a large steel insert for maximum magnetic retention. Combine all this with a flawless fit on your KaVo magnetic base, and you've got an ideal solution for dental labs and offices alike.

Mounting Systems and Accessories



MP280010 Magnetic Mounting Base Assembly

If you already have our magnetic mounting plates at your lab or office, you may only need to order the AD2 Magnetic Mounting Base Assembly. This includes the base, magnet, allen head screws and EZ cushion washer.



MP270065 AD2/Panadent/Whip Mix/SAM Screw Mounting Plates (sold in bags of 50)

If you prefer screwing your mounted cases down tight, then you'll love these plates. Sold in bags of 50, these plastic plates use self-lubricating threaded brass inserts so your models will always mount smoothly. Compatible with AD2, Panadent, Whip Mix and SAM articulators.



MP270165 Denar/Hanau (twin pin) Compatible Screw Mounting Plates (sold in bags of 50)

Looking for a plate compatible with Denar or Hanau (twin pin) articulators? Try our affordable mounting plates featuring enhanced plaster retention bridges, threaded brass inserts and solid AD2 construction.

Inside Back
Cover
blank



Advanced Dental Designs, Inc.
9880 Indiana Ave., #4
Riverside, CA 92503
1-800-AD2-2849
www.ad2usa.com