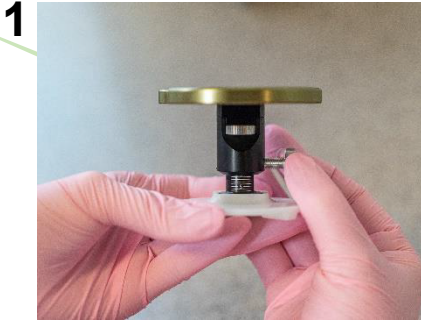


## Adjustable Platform Instructions

Items #AR500050 – AR500950, AR560150 – AR560950



Unlock the platform with the thumb screw, use the thumb wheel to set the platform height to 0, and then lock in place with the thumb screw.



Trim the bite registration material as needed so the cusp tips are visible and no material will interfere with the maxillary cast seating properly in the tips.



Snap the index tray onto the platform in the index holes, ensuring the tray is flat on the platform.



Place the platform securely on the magnetic base on the lower frame of the articulator.



Seat the maxillary cast on the index tray in the cusp tips.



Install a mounting plate on the upper frame, set the incisal pin to 0, add plaster as needed.



Close the upper frame onto the maxillary cast and allow to dry. Apply light pressure to upper frame to prevent movement while drying.



Open the articulator, remove the index tray and install the waxing spacer plate in place of the index tray.



Determine the work needed (i.e. adding 2mm of incisal length). Unlock the table with the thumb screw, lower the table top by 2mm and lock in place with the thumb screw. Wax down to the table top